

Diseases of Insured Dogs in Japan

A.Shimamura¹ A.Hasegawa²



¹Anicom Holdings Inc. ²Anicom Pafe, Inc.
Tokyo, Japan

Anicom Animal Insurance in Japan



- Since 2000
- Almost 400,000 pet insured

2 Benefits of Animal Insurance

1. Prevent sick to be seriously

- ! Early treatment before serious diseases progress
- ! Easier acceptance of costly treatment

2. Prevent dogs to be sick

- ! Prevalence of medical information
- ! Development of research



Subject of Research

- ! 217,150 insured dogs (\leq 10 years old)
- ! Contracts started
during 2008/April/1 ~ 2009/March/31

Incidence rate (%)

= number of claims / insured dogs

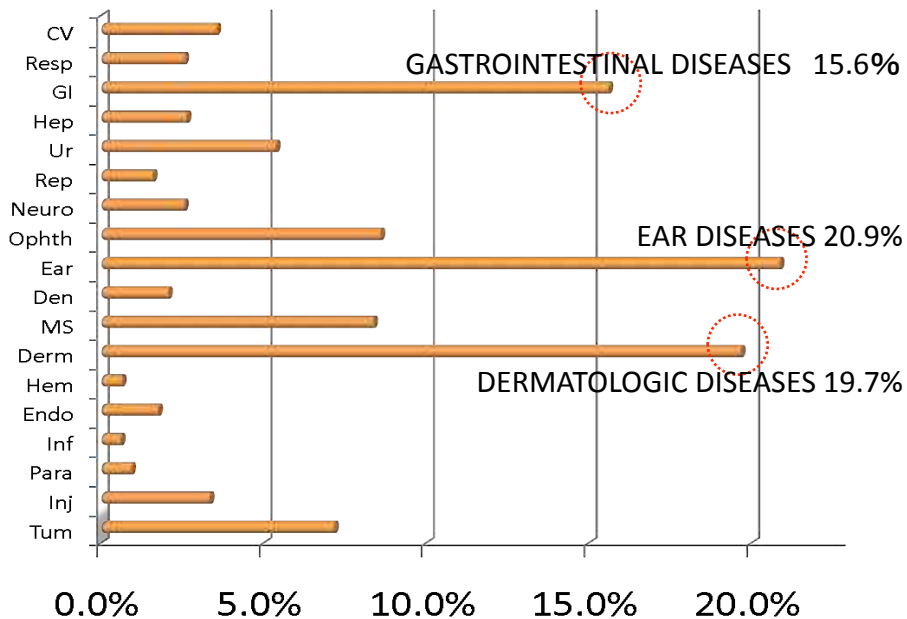
Classification of Animal Diseases

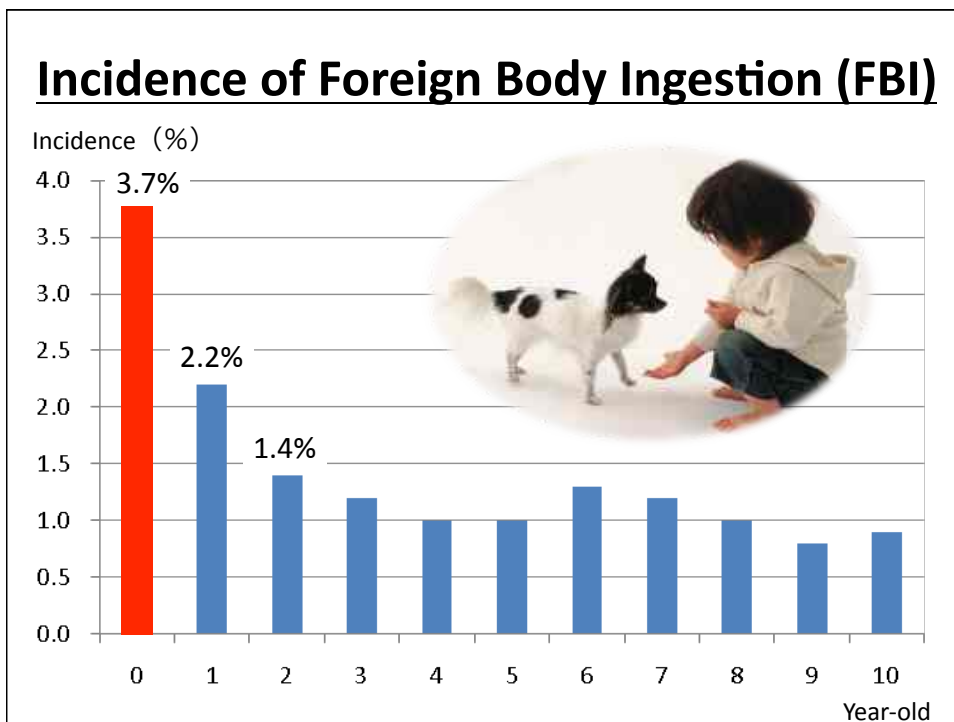
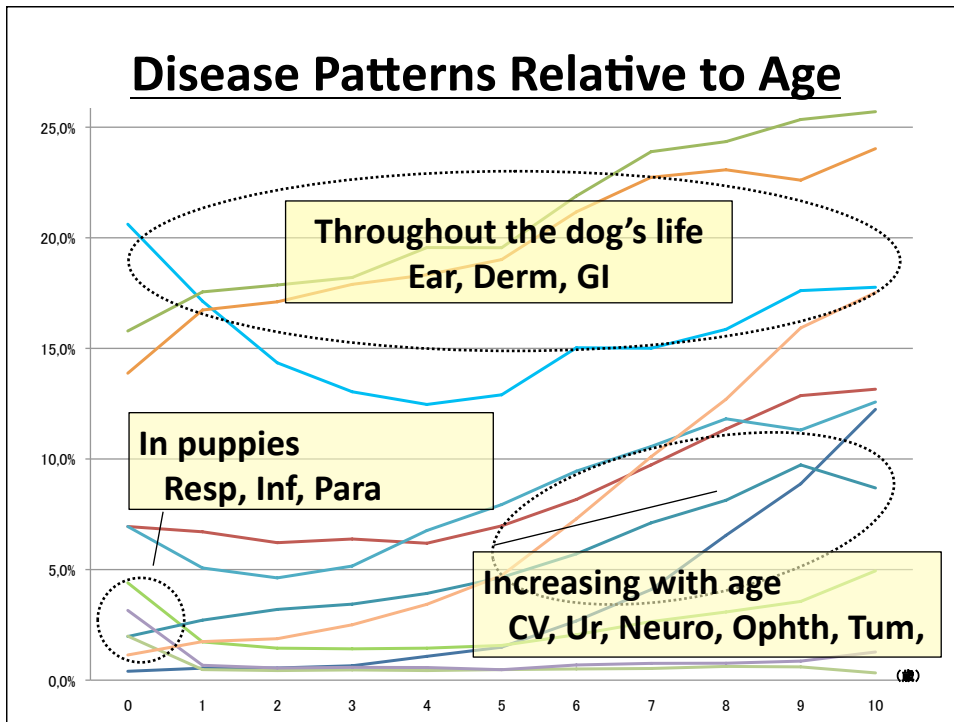
Diseases	
CARDIOVASCULAR DISEASES	CV
RESPIRATORY DISEASES	Resp
GASTROINTESTINAL DISEASES	GI
HEPATIC and PANCREATIC DISEASES	Hep
URINARY DISEASES	Ur
REPRODUCTIVE SYSTEM DISORDERS	Rep
NEUROLOGIC DISEASES	Neuro

Diseases	
OPHTHALMOLOGIC DISEASES	Ophth
EAR DISEASES	Ear
DENTAL and ORAL DISEASES	Den
MUSCULOSKELTAL DISEASES	MS
DERMATOLOGIC DISEASES	Derm
HEMATO-IMMUNE DISEASES	Hem
ENDOCRINE DISORDERS	Endo
INFECTIOUS DISEASES	Inf
PARASITIC DISEASES	Para
INJURY	Inj
TUMORS	Tum

**when more than
2 diseases were diagnosed,
Main diseases were
selected.**

High Incident Diseases





Incidence of FBI in Puppies by Breeds

Breed	Rate(%)
Labrador Retriever	6.4
French Bulldog	6.3
Cavalier King Charles Spaniel	6.2
Miniature Schunauzer	5.3
Yorkshire Terrier	4.3
Average In all Puppies	3.7

FBI

Foreign
Body
Ingestion



家族みんなで、STOP 誤飲! チェックリスト: ワンちゃん編

お家に帰ったら、すぐチェック! (月 日)

1	イスやソファ、マットなどの布製家具から、ワンちゃんの間隙で糸が出ていませんか?	<input type="checkbox"/>	出ていません
2	ユリやシクラメン等、ワンちゃんに中毒を起こす可能性のある(毒薬)植物を置いていませんか?	<input type="checkbox"/>	置いていません
3	薬やサプリメント、タバコ等は、ワンちゃんの届かないところに必ず片付けていますか?	<input type="checkbox"/>	片付けています
4	テーブルや床の上にワンちゃんが届かないよう、イスなどを片付ける習慣はできていますか?	<input type="checkbox"/>	できています
5	口にすっぽり入ってしまうようなおもちゃはありませんか?	<input type="checkbox"/>	ありません
1週間後に、家族みんなでチェック!			
6	ひとりであるときなどにタオルや毛布、ペットシーツ等を振り回し奪ってしまったことはありませんか?	<input type="checkbox"/>	
7	口にくわえたものは、声をかけると素直に返してくれませんか?	<input type="checkbox"/>	
8	食事からは、栄養だけでなく、遊戯も十分に得られ、満足しているようですか?	<input type="checkbox"/>	

STOP 誤飲

Top 3 Reasons for Death Claims in 10-year-old Dogs

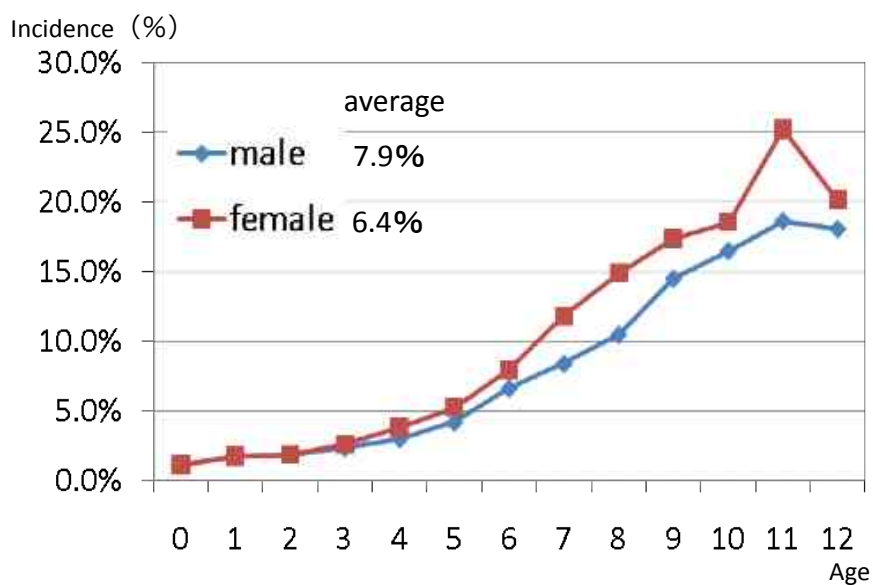
1.! **CARDIOVASCULAR
DISEASES 20.6%**

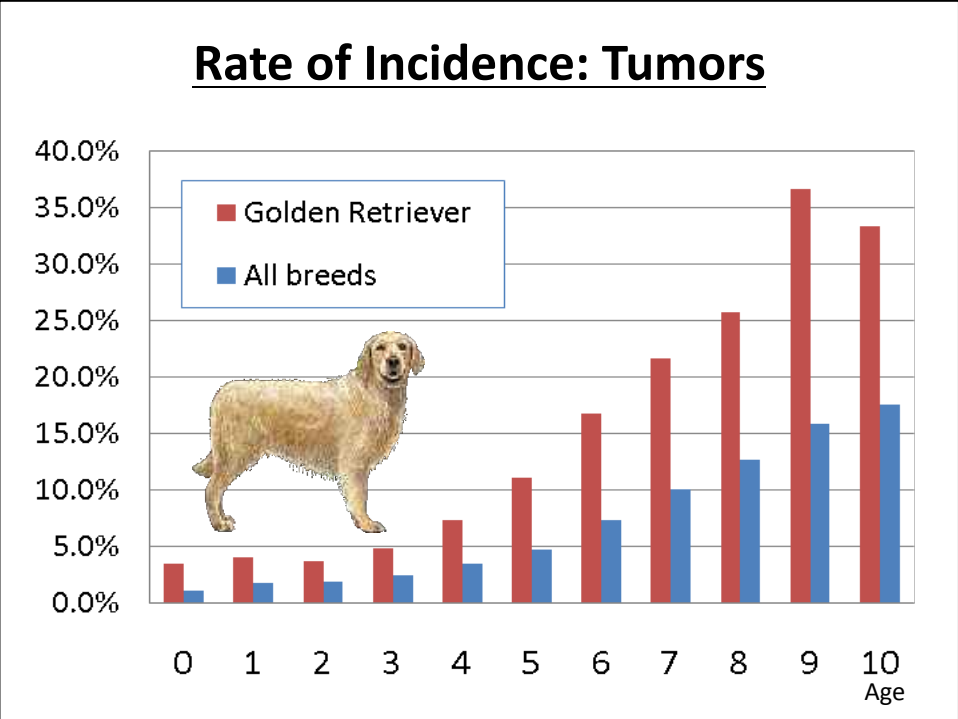
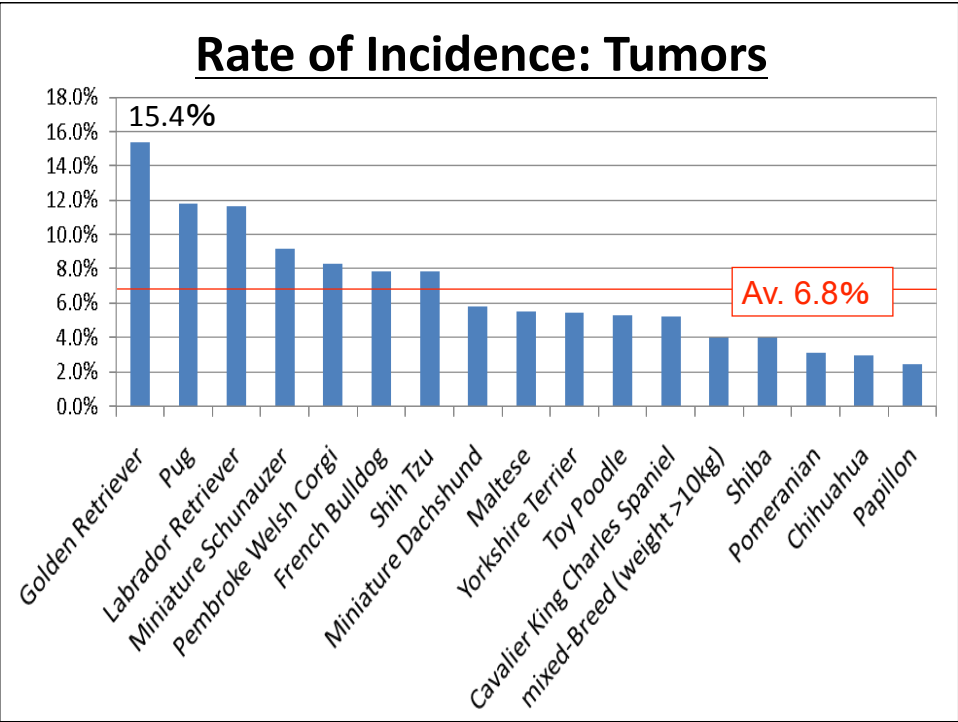
2.! **TUMORS 16.9%**

3. **GASTROINTESTINAL
DISEASES 10.3%**



Rate of Incidence: Tumors





Summary:1-3

- 1 .Most common diseases of insured dogs in Japan were ear diseases, Dermatologic Diseases and Gastrointestinal Diseases.
- 2 .Three patterns were detected in the incidence of diseases.
 - ① high rate through the dog's life
 - ② high rate in puppies
 - ③ increasing with age
- 3 .Foreign body ingestion is frequent in puppies.

Summary:4-6

- 4 . Tumors was the second reason of the claimed payment just prior to the death.
- 5 .Incidence rate of tumor was highest in Golden Retrievers among top 17 insured breeds.
- 6 .Incidence rate of tumor in female (7.9%) was higher than that in male (6.4%). It would due to high incidence of mammary tumor in female.

Conclusion and Discussion

Insurance data can be used to analyze canine disease and help prevent serious illness.



1. Canine Preventive Medicine

2. Medical Research + Development



**Thank you
for your attention**

*Family's not complete
without a pet.*

